



Show Name: Rhinoceros Library Drop

Description: 3 Pieces of painted muslin overlap is on both sides of the center bookcase

Tie Lines at top

Chain in bottom pocket

Fabric: Seamless Painted Muslin

Notes: Taped "target" on back for Rhino

Sizes: Stage Left 16'-4" height X 9'-4" width

Center 16'-4" height X 7'-11" width

Stage Right 16'-4" height X 9'-4" width



Show Name: Rhinoceros Corner Building

Description: 3 Pieces of painted Muslin with overlap on both sides of center of building

Tie Lines on top

Chain in bottom pocket

Fabric: Seamless Painted Muslin

Sizes: Stage Left 18'-4" height X 9'-1" width

Center 18'-4" height X 10'-4" width

Stage Right 18'-4" height X 9'-5" width



Show Name: Rhinoceros Bedroom Drop

Description: 2 Pieces of painted Velour

Overlap is in the center in oval chair

Kabuki Drop

Chain in bottom pocket

Fabric: Velour 54 Marvel Cashmere from Rosebrand

Sizes: Stage Left 16'-6" height X 10'-0" width

Stage Right 16'-6" height X 10'-9" width



Show Name: Sweeney Todd London Drop

Description: Translucent Seamless Muslin

Tie lines on top

Pipe pocket on bottom

Fabric: Seamless Painted Muslin

Size: 23'-7" height X 39'-3" width



Show Name: Stage Right Shakespeare in Love Sky

Description: Translucent Seamless Muslin

Tie lines on top

Pipe pocket on bottom

Fabric: Seamless Painted Muslin

Size: 23'-10" height X 19'-8" width



Show Name: Stage Left Shakespeare in Love Sky

Description: Translucent Seamless Muslin

Tie lines on top

Pipe pocket on bottom

Fabric: Seamless Painted Muslin

Size: 23'-3" height X 28'-5" width



Show Name: Center Stage Shakespeare In Love Sky

Description: Translucent Seamless Muslin

Tie Lines on Top

Pipe pocket on bottom

Fabric: Seamless Painted Muslin

Note: This drop is shown tied with fullness

Size: 23'-6" height X 56'-10" width



Show Name: Music Man Firefly Drop

Description: Translucent Seamless Muslin

Tie Lines on top

Pipe pocket on bottom

Fabric: Seamless Painted Muslin

Notes: The bottom dark bushes are opaque because there are LED fireflies in the bushes

Size: 24'-0" height X 39'-6" width



Show Name: Black Satin Blackout Drop

Description: Black Satin with Velcro all the way around it
Seams every 58 inches running vertically

Fabric: Black Satin

Size: 15'-8" height X 26'-8" width



Show Name: Galileo Black Border Scrim

Description: Black Scrim

Tie lines on top

Pipe pocket on bottom

Fabric: Black Sharks Tooth Scrim

Size: 8'-0" height X 40'-0" width



Show Name: Black Polyester Drop

Description: Black Polyester Drop with 50% fullness

Tie lines on top

Pipe pocket on bottom with weights in both bottom corners

Fabric: Black Polyester

Size: 25'-0" height X 40'-0" width



Show Name: 1 of 2 Natural Gauze

Description: Seamless Natural Gauze surged on all four sides

Fabric: Seamless Natural Gauze

Notes: White plastic rings on sewn on SR corners top and bottom

3 white plastic rings sewn on off stage side

Size: 24'-0" height X 20'-0" width



Show Name: 2 of 2 Natural Gauze

Description: Seamless Natural Gauze surged on all four sides

Fabric: Seamless Natural Gauze

Note: Magic Marker writing on both sides

White plastic rings sewn on SL top and bottom

3 Plastic rings sewn on off stage side

Size: 24'-0" height X 19'-0" width



Show Name: Blue Bounce Drop

Description: Painted Muslin

Tie lines on top

Pipe pocket on bottom

Fabric: Seamless Muslin

Size: 24'-9" height X 39'-8" width



Show name: Plexiglass Slipper Austrian Shimmer Scrim

Description: Sewn in Fullness

Tie lines on top

Weights on bottom

Austrian 4 pick points

Fabric: Rosco Shimmer Scrim White/Irid./ Gold

Notes: Repaired in Feb. 2020 small picks and holes

Size: 21'-0" height X 32'-0" width



Show Name: Plexiglass Slipper Hardware



Show name: White Poly Silk 2 Pieces

Description: 2 pieces of Poly Silk tacked together

5 Horizontal seams

Hem at Top Sides and Bottom not sewn

Fabric: White Poly Silk

Notes: Two repaired rips

Small L shape rip on SR top

Size: 21'-4" height X 33'-6" width Center Opening 16'-8" from SR side



Show name: White China Silk

Description: Tie line at top

Weights at bottom

4 vertical seams

Fabric: White China Silk

Size: 24'-0" height X 22'-0" width



Show name: 1776 Constitution Scrim

Description: Velcro on all 4 sides

Fabric: Painted Sharks Tooth Scrim

Size: 25'-4" height X 31'-0" width



Show Name: Ah Wilderness Scrim

Description: Blue painted Scrim with silk leaves glued on

Tie Line at Top

Pipe Pocket on Bottom

Fabric: Blue Shares Tooth Scrim

Notes: Silk leaves glued on light in the middle heavier to edges to create depth

Size: 22'-0" height X 38'-0" width



Show Name: Ah Wilderness Painted Scrim Detail



Show Name: All the Way American Flag

Description: Top 2 feet Black Velour

American Flag underneath

Tie Lines on Top

Finished on Sides and Bottom

Rope sewn in sides with loops on the bottom

Fabric: Top 2 Feet Black Velour and the American Flag is Nylon

Size: 20'-0" height X 36'-0" width



Show Name: Chad Deity Purple Curtain

Description: Tie Lines at Top

Weights on the bottom

Fullness pleats ever 6 inches

Fabric: Violet Banjo Cloth

Size: !8'-0" height X !8'-0" width



Show Name: Commedia Pinnochio Interior

Description: Pipe Pocket at top

Dowel pocket on the bottom

Fabric: Seamless Painted Muslin

Size: 6'-10" height X 8'-8" width



Show Name: Commedia Pinocchio Exterior

Description: Pipe Pocket at top

Dowel pocket on the bottom

Fabric: Seamless Painted Muslin

Size: 6'-0" height X 8'-8" width



Show Name: Count of Monte Cristo Teal Sheer Curtain

Description: 4 inch pleats every 18 inches

Curtain hooks on top

Weighted on bottom

Fabric: Teal Sheer Fabric

Size: 22'-4" height X 16'-0" width



Show Name: Count of Monte Cristo Corner Teal Sheer Painted Detail
Description: Painted detail of corner



Show Name: Count of Monte Cristo Teal Sheer Payette Detail
Description: stenciled detail with large gold payette sewn on



Show Name: Enchanted April Scrim

Description: Tie Lines on Top

Pipe Pocket on the Bottom

Fabric: Painted Sharks Tooth Scrim

Size: 25'-0" height X 40'-0" width



Show Name: Into the Breeches Foliage Border

Description: Tie Lines on Top

Cut with Scenic Netting glued on the bottom

Fabric: Painted Muslin

Size: 15'-0" height X 31'-0"width



Show Name: Jane Eyre Painted Scrim Curtain

Description: Tie Lines on Top

Weights on the bottom

Pleated every 5 inches

7 vertical seams every 55 inches

Fabric: Natural Cotton Scrim 55 inches wide

Notes: 2 minor holes on seams & one small tear (needs repair)

Size: 22'-6" height X 18'-8" width



Show Name: Jane Eyre Painted Scrim Bottom Detail



Show Name: Jane Eyre Painted Scrim Close up



Show Name: Luck Be A Lady Austrian Sheer

Description: Tie Lines on Top

Weights at bottom

6 Pick points

Fabric: Icicle 58 Mediterranean

Size: 20'-0" height X 16'-# width



Show Name: Luck be a Lady Hardware



Show Name: Peter Pan Jolly Roger

Description: Batten drop on Top

Cut on Bottom to look ragged

Fabric: Painted Muslin

Size: 12'-10" height at longest point X 17'-3" width



Show Name: Venus in Fur Grey Velour Curtain

Description: Curtain track on top attaches to S hooks

Weighted on bottom

Box Pleat 4 inches wide then 8 inches space then 4 inch pleat

Fabric: 60" Super Velour 8 oz. Grey

Notes: Hardware is with the drop

Size: 11'-0" height X 8'-6" width



Show Name: Venus in Fur Curtain Hardware



Show name: Frog & Toad Border

Description: Tie Lines at Top

Pipe Pocket at Bottom

Velcro on sides

Fabric: Seamless Muslin

Size: 5'-0" height X 40'-0" width



Show name: White Bobinette Drop

Description: Velcro on top

Weighted on bottom

Pleated 3 inches then 12 inches space.

One seam in center pleat running vertically

Fabric: Weave A White Bobinette

Notes: Slight stain on Sr bottom corner only noticeable close up

Size: 24'-4" height X 14'-2" width Bottom can be flared out to 20'-10"



Show Name: Pleated Natural Cotton Scrim Drop

Description: Tie Lines on Top

Pocket in bottom

Pleated 2 ½ inch pleat 3 ½ space

Vertical seams every 55 inches 7 panels total hid in pleats

Fabric: Cotton Scrim 55 Natural

Notes: 3 Minor holes in seams needs stitching

Size: 34'-0" height X 17'-0" width



Show Name: Evita SL White Projection Screen

Description: Tie Lines on Top

Pipe Pocket on Bottom

Velcro on SR side

Fabric: White projection vinyl

Size: 21'-0" height X 12'-0" width



Show Name: Evita SR White Projection Screen

Description Tie Lines on Top

Pipe Pocket on Bottom

Velcro on SL side

Fabric: White projection vinyl

Size: 21'-0" height X 17'-10" width



Show Name: Grey Front and Rear Projection Screen #1

Description: Grommets on all 4 sides

Fabric: Grey projection Vinyl

Notes: Large Red Rubber bands to stretch projection screen

Size: 11'-0" height X 24'-6" width



Show name: Grey Front and Rear Projection Screen #2

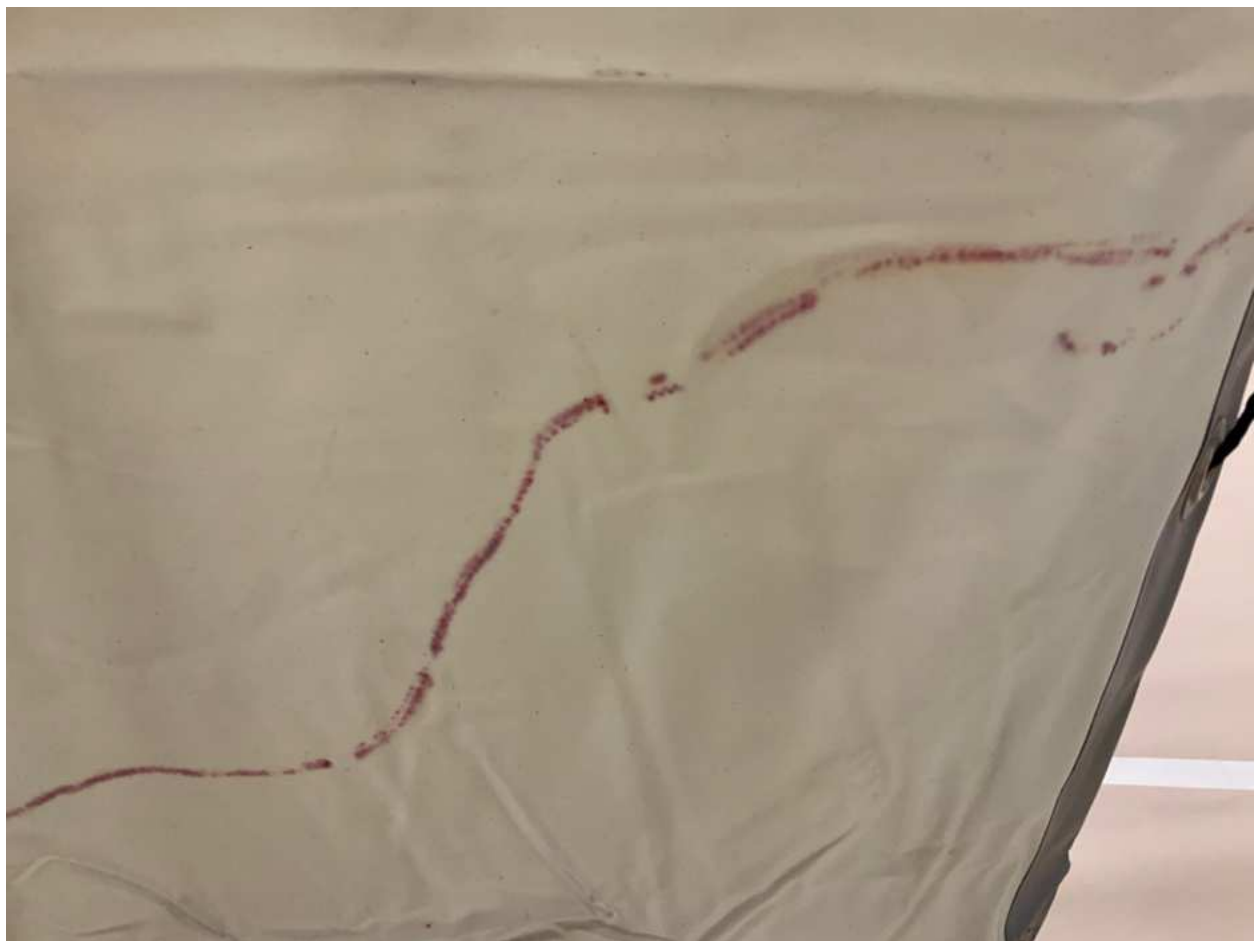
Description: Grommets all 4 sides

Fabric: Grey Vinyl projection Screen

Back is a different shade of Grey than the front

Notes: Red Magic marker marks on the back in two places

Size: 13'-0" height X 15'-6" width



Show Name: Grey Front Projection Screen #2 Detail



Show Name: Life Span of a Fact Printed Fabric Drop

Description: Velcro on all 4 sides

Fabric: Printed on White Seamless Fabric

Notes: Translucent sky, Foreground Mountains and Town are back painted

Size 7'-0" height X 29'-0" width



Show Name: Tavern Printed Drop

Description: No attachment points

Fabric: Printed on White Seamless Fabric

Notes: Raw fabric on edges no sewing

Size: 9'-8 ¾" height X 16'-4" width

With white border add 1 ½ inches on all 4 sides



Show Name: Matchmaker Printed Drop

Description: Velcro on all 4 sides

Fabric: Printed on White Fabric

Size: 14'-0" height X 20'-8" width



Show Name: Mertz Full Stage Ground Cloth with Apron

Description: Tie Lines on Upstage Side for Storage

Fabric: Heavy Weight Canvas

Size: 38'-0" height X 36'-0" width



Show Name: Ragtime SR and SL Show Drop

Description: Curtain clips on Top

Pipe Pocket on the Bottom with chain weight

Fabric: Princess Cherry Red Velour 54" 16oz. with Gold Fringe 9"

Note: 6-1/2" pleat spaced 6"

Size: 16'-0" height X 22'-0" Width with center split at 11'-0"



Show Name: The Originalist SR and SL Show Drop (Closed)

Description: Curtain Clips on Top

Pipe Pocket on the Bottom with chain weight

Fabric: Marvel Jezebel Velour 54" with Gold Fringe 6"

Note: 5" pleat spaced 6-1/2", Single Swag

Size: 16'-9" height X 32'-0" width with center split at 16'-0"



Show Name: The Originalist SR and SL Show Drop (Open)

Description: Curtain Clips on Top

Pipe Pocket on the Bottom with chain weight

Fabric: Marvel Jezebel Velour 54" with Gold Fringe 6"

Note: 5" pleat spaced 6-1/2", Single Swag

Size: 16'-9" height X 32'-0" width with center split at 16'-0"



Show Name: Blue Velour SR And SL

Description: Tie Lines at Top

Pipe Pocket at Bottom with Chain Weight

Fabric: Cornflower Blue Velour

Size: 6'-7" height X 8'-7' Width Each Piece



Show Name: Cake

Description: Tie Lines at top

Lined on back with same fabric as front

Fabric: Memorable Plum Velour 54

Notes: 7 individual pieces can be tied to different spacing

Sizes: Tails SR and SL 9'-8" height X 2'-5" width

Swags SR, Center, and SL 3'-1" height X 7'-3" width

Jabots SR and SL 4'-5" height X 1'-11" width



Show Name: Into the Breeches small curtains

Description: Large 1 ½" Grommets at top for running on to dowel

Pipe pocket at bottom with chain weight

Fabric: Jade Green Commando Cloth

Notes: 2 Sets 4 total

Size: 7'-5' height X 52 ½" width



Show Name: Into the Breeches medium curtains

Description: Large 1 ½" Grommets on top for running through dowel
Pipe pockets with chain weight

Fabric: Jade Green Commando Cloth

Notes: 1 Set 2 total

Size: 7'-5" height X 6'-4" width



Show Name: Into the Breeches large curtains

Description: Large 1 ½" Grommets on top for running through dowel

Pipe Pocket with chain weight

Fabric: Jade Green Commando Cloth

Notes: 1 Set 2 total

Size: 7'-5" height X 7'-11" width



Show Name: Showboat 10' Border

Description: Tie Lines at the Top

Pipe Pocket on the Bottom

Fabric: 54 in 16oz Princess Cocoa Velour

Size: 10'-0" height X 40'-0" width



Show Name: Showboat 4' Border

Description: Tie Lines at the Top

Pipe pocket on the Bottom

Fabric: 54 in 160z Princess Cocoa Velour

Size: 4'-0" height X 31'-4" width



Show Name: Showboat 20' Legs

Description: Tie Lines on the Top

Pipe Pocket on the Bottom

Fabric: 54" 16oz. Princess Cocoa Velour

Size: 20'-0" height X 3'-8" width



Show Name: Showboat 19'-8' Legs

Description: Tie Lines at the Top

Pipe Pocket on the Bottom

Fabric: 54" 160z. Princess Cocoa Velour

Size: 19'-8' height X 3'-8' width



Show Name: Small Forest Drop

Description: Tie Lines at the Top

Velcro on the SR and SL Outside seams

Hem at the Bottom

Fabric: Printed Fabric

Center seam split can be closed with the Velcro on the back

Size: 13'-0" height X 10'-0" width



Show Name: Aged American Flag

Description: Tie Lines on Top

Pipe Pocket at bottom

Fabric: Printed Fabric

Size: 10'-4' height X 6-0' width



Show Name: Barnum Museum Drop

Description: Rope sewn in at top with loops on each side
Hemmed on the sides and bottom

Fabric: Printed Fabric

Size: 8'-0" height X 8'-0" width



Show Name: Knoxville

Description: tie lines on top and pipe pocket on bottom

Fabric: Seamless Translucent Muslin

Size: 24'-0 height X 40'-0" width

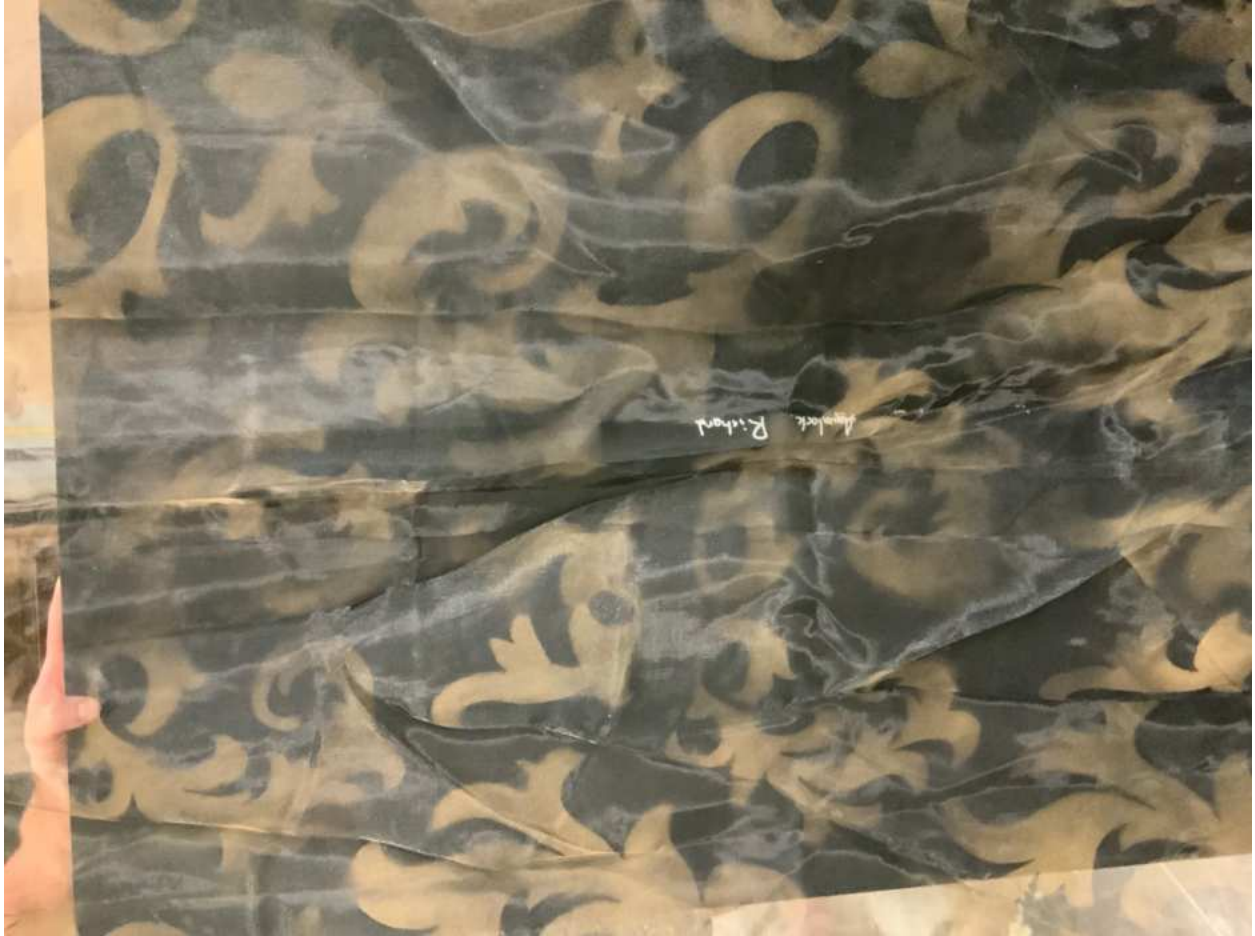


Show Name: Immortal Longings

Description: Split curtain with tie lines at top and fringe at bottom

Fabric: Voile 118 Shimmer Charcoal

Size: 21'-0" height X 18'-0" width each panel



Show Name: Immortal Longings - Detail

Description: Split curtain with tie lines at top and fringe at bottom

Fabric: Voile 118 Shimmer Charcoal

Size: 21'-0" height X 18'-0" width each panel



Show Name: The Great Leap
Description: Velcro on four sides
Fabric: Black Sharkstooth Scrim
Size: 18'0" height X 23'0" width



Show Name: The Great Leap

Description: Tie lines and pipe pocket

Fabric: White Muslin Drop

Size: 24'0" height X 40'0" width



Show Name: La Clemenza

Description: tie lines on three sides and pipe pocket on bottom

Fabric: Heavy Weight Muslin

Size: 28'-0 height X 57'-4" width



Show Name: Knoxville

Description: grommet and tie line on top, pipe pocket on bottom

Fabric: Muslin Seamless translucent

Size: 26'-8 height X 40'-4" width



Show Name: Knoxville

Description: Pleated 5 feet in from sides SR & SL, 5 grommets on top and hem on sides and bottom

Fabric: loose woven cotton gauze

Size: 26'-8" height X 22'-0" width



Show Name: Knoxville

Description: Grommet with hooks on top, pocket on bottom

Fabric: Velour 54 in. FR 21 oz. Marvel Black

Size: 25'-0 height X 16'-2" width



Show Name: Crazy for You

Description: Grommet and tie line on top, chain in bottom pocket

Fabric: Voile 118 in. IFR Black

Size: 13'-0 height X 36'-0" width



Show Name: Crazy for You

Description: Grommet & tie lines on top, pipe pocket on bottom

Fabric: Muslin (back painted)

Size: 24'-0 height X 40'-0" width



Show Name: Crazy for You

Description: Velcro on 3 sides

Fabric: Muslin

Size: 15'-0 height X 11'-0" width



Show Name: Dancing at Laghnasa

Description: Grommet and tie lines on top, cut bottom

Fabric: Chaos Cloth

Size: 7'-0 height X 40'-0" width



Show Name: Frog and Toad

Description:

Fabric:

Size: 00'-0 height X 00'-0" width



Show Name: Frog and Toad

Description: Grommet and tie line on top, Pipe pocket on bottom

Fabric: Muslin Translucent

Size: 17'-10" height X 30'-0" width



Show Name: Frog and Toad

Description: Grommet and Tie lines on top, cut bottom

Fabric: Muslin

Size: 10'-0 height X 22'-0" width



Show Name: Frog and Toad
Description: Batten Drop
Fabric: Muslin and Chaos cloth
Size: 17'-11" height X 6'-0" width



Show Name: Frog and Toad

Description: Tie lines on top, Pipe pocket on bottom, Velcro on sides

Fabric: Muslin seamless

Size: 5'-0 height X 40'-0" width



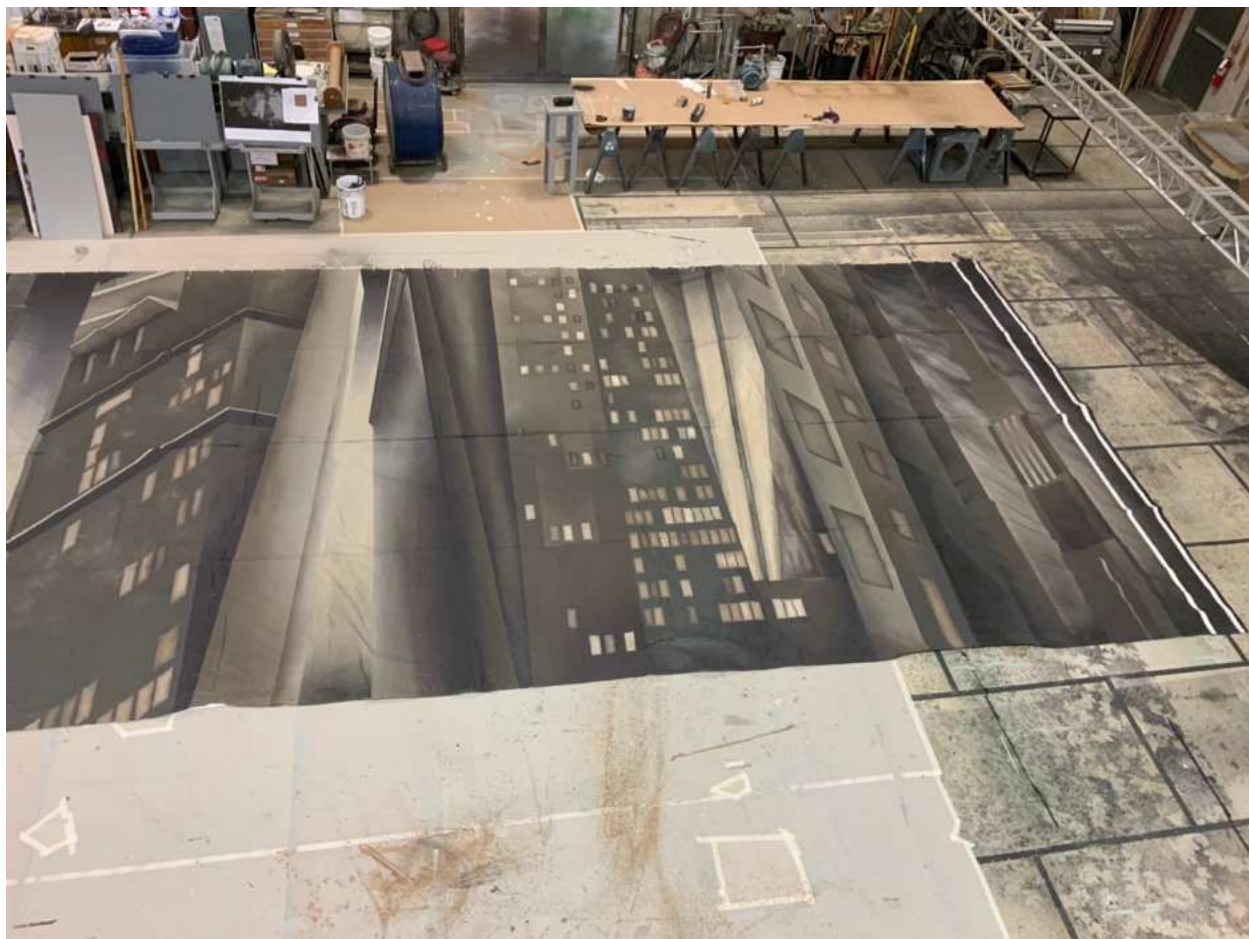
Show Name: Intimate Apparel

Description: Printed on fabric, Velcro on sides

Fabric: white

Size: Background 19'-6" height X 19'-6" width

Four Legs 19'-6" height X 4'-6" width



Show Name: 12 Angry Men Center Stage left side of drop

Description: Grommet and tie line top, Velcro both sides and pocket on bottom

Fabric: Muslin windows and sky translucent

Size: 17'-10" height X 41'-6" width



Show Name: 12 Angry Men Center Stage right side of drop

Description: Drop picture in 2 pieces

Fabric: Muslin

Size: 17'-10" height X 41'-6" width



Show Name: 12 Angry Men Stage Left

Description: Grommet and tie lines at top, pocket at bottom, Velcro SL

Fabric: Muslin sky and windows translucent

Size: 18'-0 height X 31'-0" width

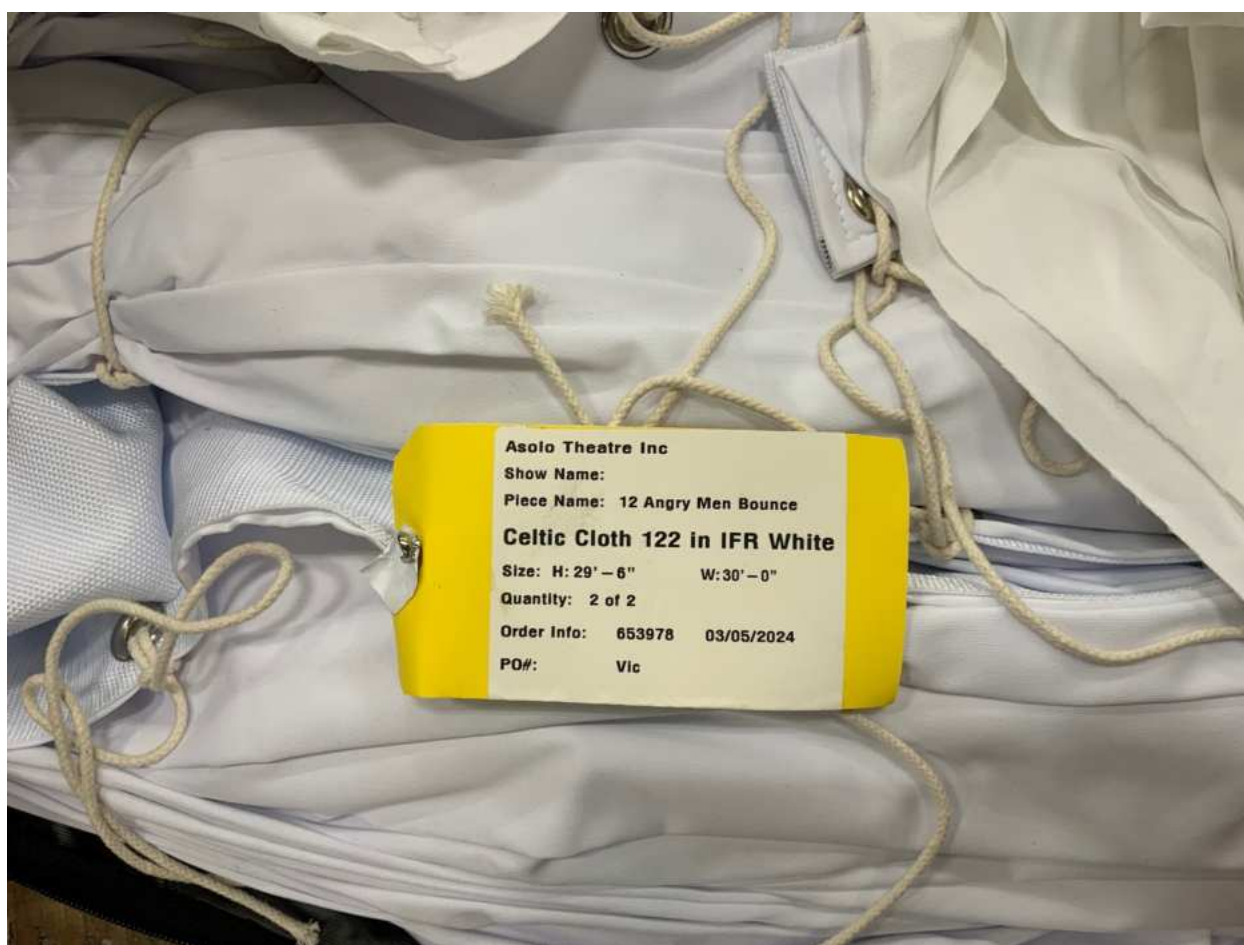


Show Name: 12 Angry Men Stage Right

Description: Grommet and tie line at top, pocket at bottom, Velcro SR

Fabric: Muslin translucent sky and windows

Size: 18'-0 height X 31'-0" width

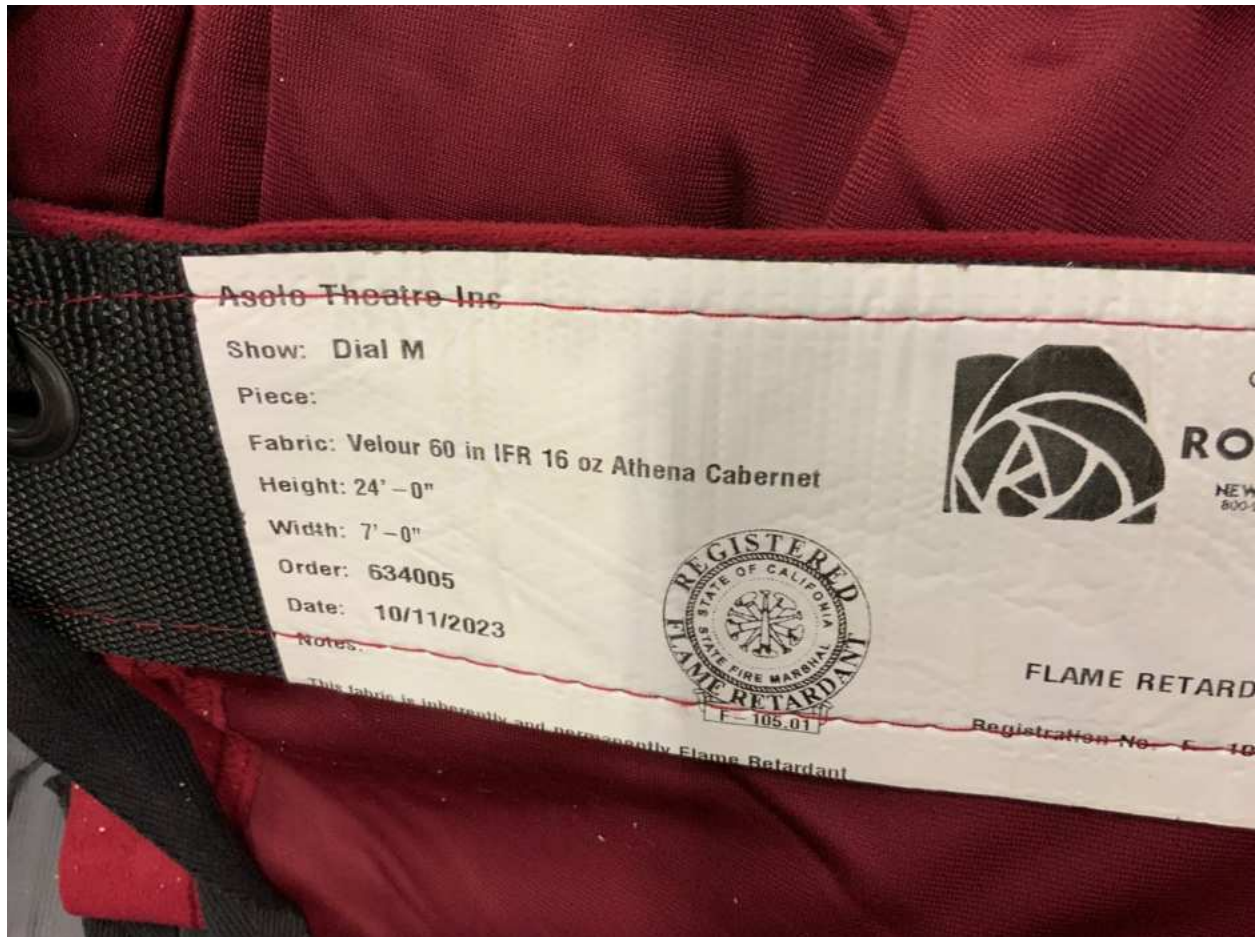


Show Name: 12 Angry Men Bounce (2)

Description: Grommet and tie line at top, pocket at bottom

Fabric: Celtic Cloth 122 in. IFR White

Size: 29'-6" height X 30'-0" width



Show Name: Dial M for Murder

Description: Grommet and tie line at top, Chain pocket at bottom

Fabric: Velour 60 in. IFR 16 oz. Athena Cabernet (Pleated)

Size: 24'-0 height X 7'-0" width



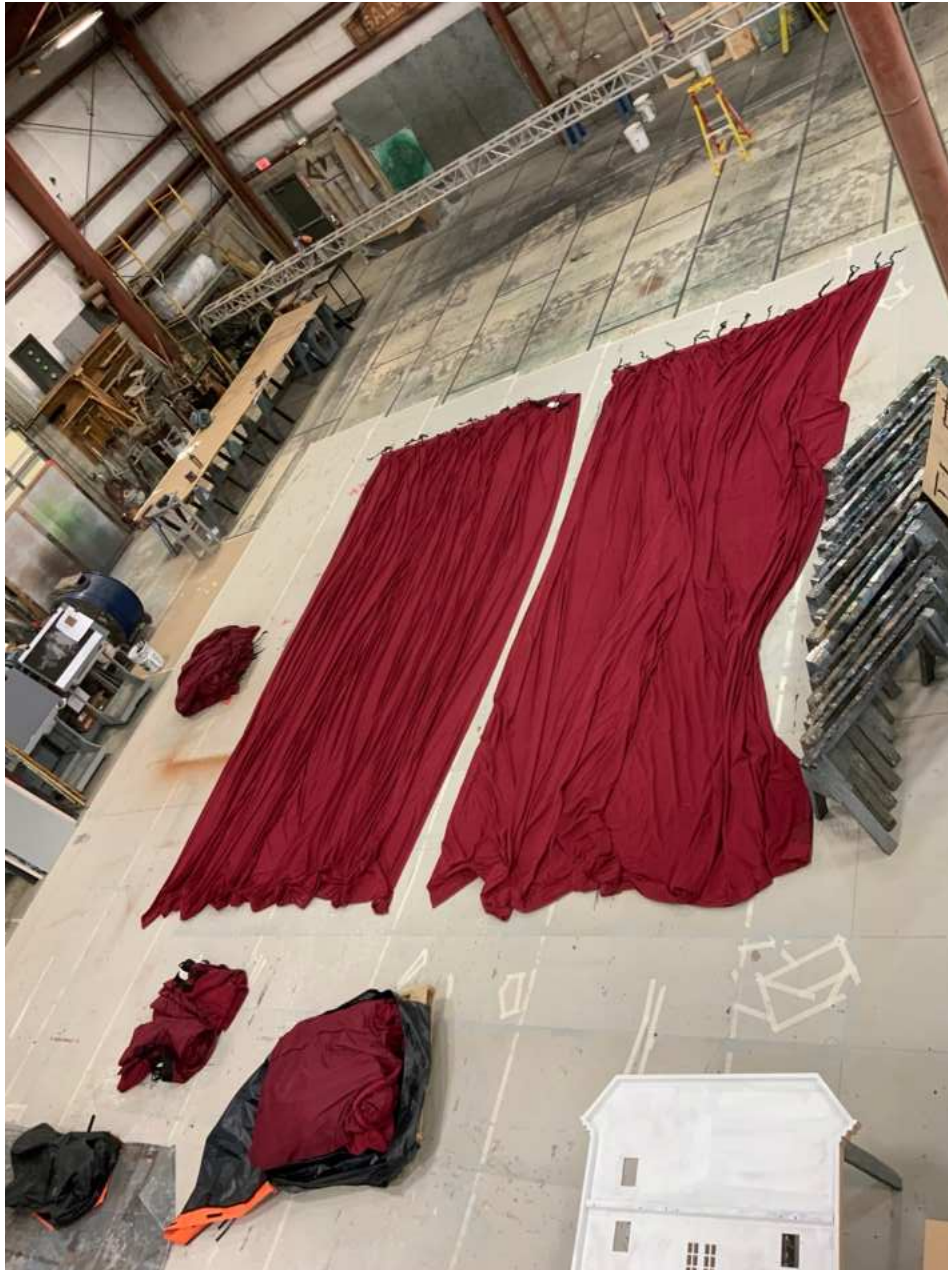
Show Name: Dial M for Murder

Description: Grommet and tie line at top, Chain pocket at bottom

Fabric: Velour 60 in. IFR 16 oz. Athena Cabernet (Pleated)

Size: Top border 13'-0" height X 40'-0" width

Bottom border 7'-9" height X 40'-0" width



Show Name: Dial M for Murder

Description: Grommet and pipe pocket at top, chain pocket at bottom

Fabric: Velour 60 in. IFR 16 oz. Athena Cabernet (Pleated)

Size: 24'-0 height X 11'-0" width



Show Name: The Great Leap

Description: Grommet and tie line, pipe pocket

Fabric: White bounce

Size: 30'-0 height X 40'-0" width (height may be incorrect, I couldn't unfold it)



Show Name: Mylar Rain Curtain (4 total)

Description: Tie lines at top

Fabric: Mylar

Size: 18'-0 height X 13'-6" width each



Show Name: Inherit the Wind

Description: Grommet and tie line at top, pipe pocket at bottom

Fabric: Muslin, Translucent

Size: 24'0" Height X 40'0" Width